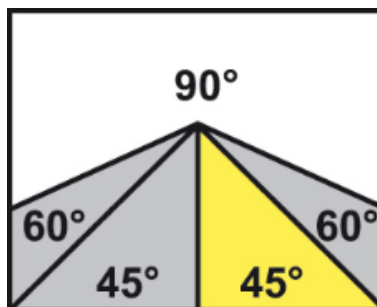




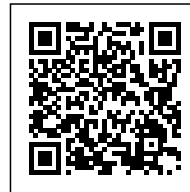
ARG 300 DCT CF-NC AUTOMAT



Upgraded version of the legendary ARG 300 CF-NC in a two-column design with a new saw blade arm. The most up to date concept of the cast iron arm creates a closed section that is hollow along its full length at all load-carrying points. A brand new design. The massive grey cast iron arm comprised of a closed section is entirely unique in the category of dual-column band saws. This,



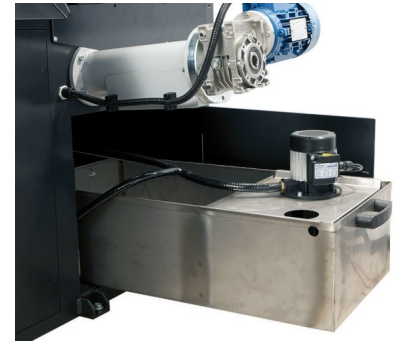
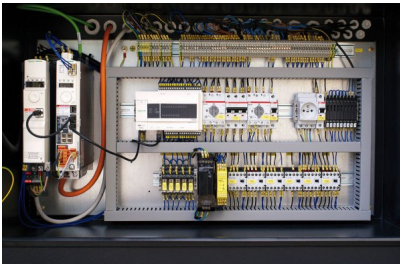
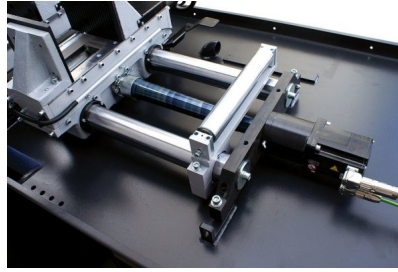
and the massive dual-column arm support moving on linear lines ensure excellent stiffness of the whole system, accurate cut during industrial cutting of full materials and a long service life of the saw blades. Original system allows for a simple arm swing, including the two-column system for cutting in angles.



Category: [Double colonnes CNC auto](#)

GALLERY IMAGES





PRODUCT DESCRIPTION

Continuous manual setting of the cutting angle in the range from 90° to 45°. The material can be cut by angular cutting or in automatic mode as well. Fully automated two-column CNC band saw is generally suitable for cutting big series in the heaviest and non-stop operating plants, and also for cutting heavy workpieces of larger cross-sections. The machine is equipped with a workpiece feed by industrial servomotor with a new control system. The servomotor and ball screw ensure high speed and maximum accuracy of workpiece feed, even in multiple feed when cutting long pieces. Options of setting three feed rates - 27, 42 or 50 mm/second according to weight and length of the workpiece to be cut. Maximum length of a single feed is 500 mm.



Central control panel with a big colour touch screen (7.5") ensures simple intuitive control of all features of the machine. The control unit allows for programming of up to 60 programmes for quick setting of the feed length in repetitive production. Each programme can be annotated, e.g. by the drawing number. It is also possible to programme and cut different number of pieces of different sizes without the need for further operation of the machine.

The machine can be controlled in fully automatic, semi-automatic or manual mode. In manual mode all functions of the machine are controlled separately. Workpiece clamping and arm feed to and away from the cut in the desired position according to section of the workpiece are controlled by hydraulics. The so-called „floating“ design of the feed vice ensures accurate feeding of uneven and crude workpieces. Regulation of pressure of the feeding and fixed vice is included in the standard equipment.

Maximum cutting efficiency is maintained also thanks to the possibility of setting optimum saw blade speed by a frequency converter in the range between 15 and 90 m/min., which significantly contributes to cutting accuracy and service life of saw blades.

Maximum accuracy of workpiece feeding is based on a very robust construction of the machine with all the main parts made of grey cast iron and massive framework of the feeding system. Large base and overall massive framework guarantee exceptional stability of the machine even when cutting heavy workpieces. The base is equipped with a large removable chips container and allows for installation of an optional worm chips container. Industrial band 27 x 0.9 mm is manufactured in many versions and allows for cutting of wide range of materials, including stainless steel or tool steel.




- Very robust machine framework composes of castings from grey cast iron and ensures vibration absorption.
- Modern concept of the band saw arm allows for large cutting ranges in upright and angular cuts.
- All of electrical wiring and coolant distribution are concealed in hollow parts of the arm which means they are protected from damage.
- The new concept of the arm also brings a great simplification when changing the saw band or when cleaning the inside of the arm. You just need to open the hinged back cover of the arm and it will stay locked in the upper position.
- Large diameter blade wheels and precise three-side hardened steel blade guides ensure



long service life of the blade and cutting accuracy.

- Overdesign of blade wheel bearings, tensioning wheel system and all rotary parts ensure long service life of the machine.
- Noiseless and maintenance-free band drive is provided by an industrial electric motor with worm gearbox.
- The machine is connected to a complete cooling system with high-performance pump and possibility of regulating the flow on both guiding heads independently and on an additional adjustable outlet. Coolant tank with a high-performance pump are placed in the base of the machine.
- The machine checks correct tension or breakage of the saw blade. If the saw blade breaks the machine automatically switches off.
- Easy intuitive controls by ergonomically placed controls on the rotary central control panel.



	90°	+45°
	300	245
	290 x 290	245 x 245
	360 x 295	245 x 250

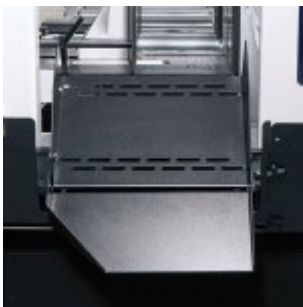
Main motor	400 V / 50 Hz / 2,2 kW
Pump motor	400 V / 50 Hz / 0,05 kW
Hydraulic motor unit	400 V / 50 Hz / 0,55 kW
Servo motor of the feed	1,2 kW
Feed rate of material	1,6 / 2,5 / 3 m/min.
Saw blade speed	15-90 m/min.
Working height of vice	850 mm
Hydraulic system oil	cca 25 l (ISO 6743/4-HM, DIN 51 524 part 2-HLP)
Coolant tank	cca 35 l
Machine dimensions (min.)	2100 x 1700 x 1600 mm
Machine dimensions (max.)	2700 x 2215 x 1780 mm
Machine weight	1270 kg

Convoyeurs disponibles:



Frequency converter - Standard equipment

Enables continuous blade speed regulation between 15-90 m/min. and thus setting the optimum cutting conditions for the given material.



Material chute - Standard equipment

Continuously joins the vice behind the cut and allows for easy slide of cut pieces into a container when cutting larger series. The chute construction consisting of 2 parts prevents leakage of the coolant.



Rinse spray gun - Standard equipment

For cleaning working space of the machine.



LED Light - Standard equipment

High-quality lighting of the work area by a line of powerful LEDs with a cover. An invaluable tool especially when the lighting at the workplace is insufficient.



Hydraulic pressure device

Used to clamp bundles of material to be cut. It provides reliable clamping with hydraulically operated vertical pressure, working within the machine's cycle. It is installed on the fixed vice and feeding vice.



Halogen lamp

Provides good lighting of the workplace of the machine. An invaluable tool especially when the lighting at the workplace is insufficient.



Oil mist lubrication

Creates an oil mist that is sprayed onto the cutting edge. It replaces the use of a classic coolant, especially when cutting sections during which leakages may occur. Possibility of using organic oils.



Laser alignment

High-quality industrial laser projects the cutting line on the material to be cut. Makes the setting of the required material length simpler, faster and more accurate.



Screw chips conveyor

Ensures smooth removal of chips from the machine. Reduces the time needed for the cleaning of the machine especially when cutting series of full materials producing large amount of chips.



Saw band tension indicator

Ensures accurate tensioning of the saw band to a required value according to the pressure gauge and its control during the use of the machine. Optimum tensioning of the saw band is essential for its service life and cutting accuracy.



Constructeur français
de moyens de
trouçonnage standards
et spéciaux.

FICHE TECHNIQUE

ARG 300 DCT CF-NC AUTOMAT

<https://www.coup-indus.fr/produit/arg-300-dct-cf-nc-automat/>



Chip container

For easy handling is chip container equiped with wheels and swivel chip bin.